



Product **Catalog**



# Smart Switch



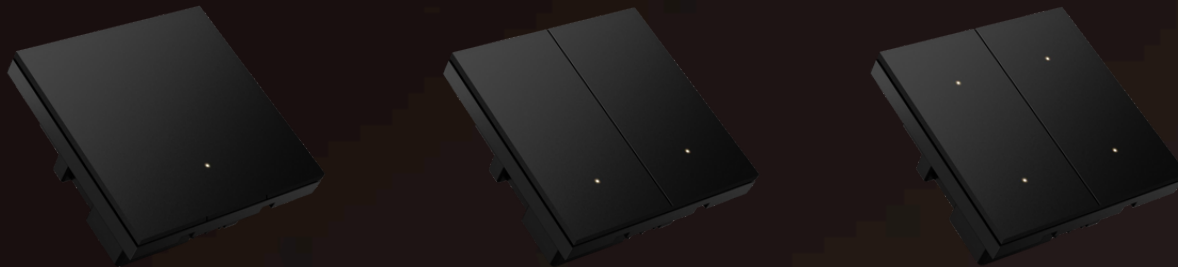
## JIE6 Smart Switch

4 relay output, single load power: < 500 W; Input AC 220v ~ 50/60hz; Surface material: PC; Surface color: black, white and gray. Size: 86\*86\*28mm It contains four scene buttons.

JIE6

plastic

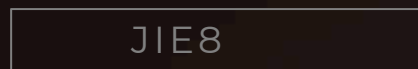
glass





# JIE8 Intelligent Smart Switch

4 relay output, single load power: < 500 W; Input AC 220v ~ 50/60hz; Surface material: PC; Surface color: black, white and gray. Size: 86\*86\*28mm It contains four scene buttons.





# Smart Panels



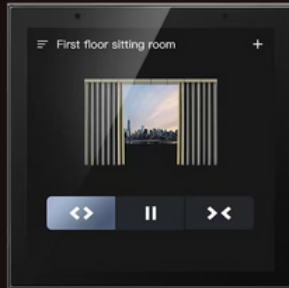
## 4-inch LCD central control panel

The JIE Tech. 4 - inch LCD screen comes with a Zigbee gateway. It has three built - in relay outputs, with the load power of a single circuit being less than 500W. It is equipped with two audio interfaces, which can be connected to two 25 - watt speakers. Additionally, it supports Bluetooth audio connection, enabling connection to a mobile phone's Bluetooth player or a Bluetooth speaker.



Linux

JIE-YX6B



# 4-inch LCD central control panel

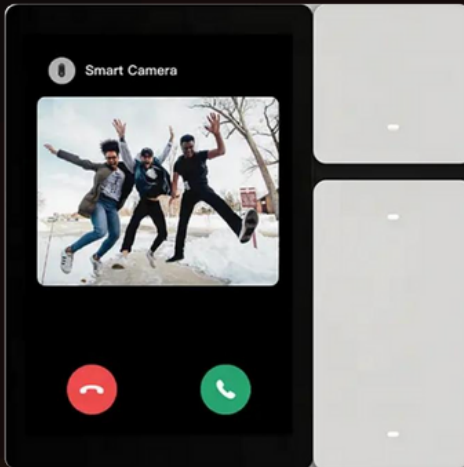
Four-inch LCD central control panel with gateway, voice, background music, device group control and device/scene sub-area control. With network interface, WIFI function, 2 audio interfaces, Bluetooth transmission connection audio, 86\*86\*30mm.

JIE-YX6A

Android



JIE yamini



JIEPP01-z



## JIE-Tech Central Control Panel

Linux

JIE-Tech 3.5-inch central control panel switch with 3 relay outputs, input: AC 220 V ~ 50 / 60 Hz. Single load &lt; 250W; Support Bluetooth gateway function, infrared remote control emission function, support doorbell and camera viewing.

JIE-Tech 4-inch LCD screen with two relay outputs.  
Built-in Alexa



# JIE-Tech 10-inch Central Control Panel

JIE-Tech 10-inch LCD screen with two relay outputs. Built-in Alexa

Android

JIE10-M2E

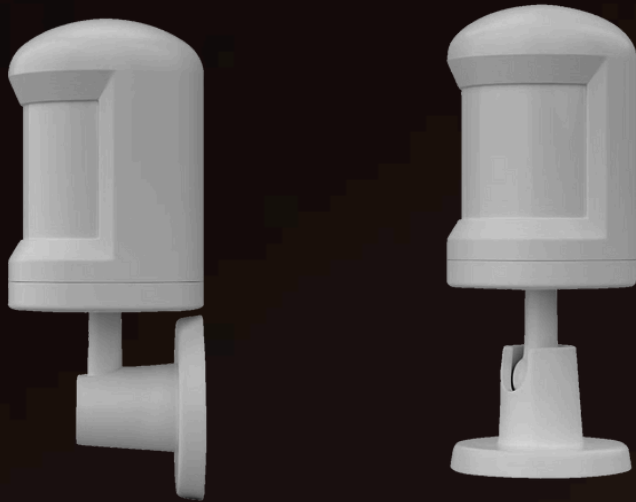




# Smart Sensor



## Infrared human body sensor



Infrared human body sensor, JIE-Tech zigbee3.0 communication, 2032 button cell power supply. The induction distance is adjustable from 0 to 0-10M, and the sensitivity is adjustable.

JIE-01



# Smart security sensor

Zigbee communication, JIE-Tech Smart Platform. Intelligent door sensor, smoke sensor, gas sensor, water immersion sensor, temperature and humidity sensor, emergency button sensor

JIE-02-AF-07





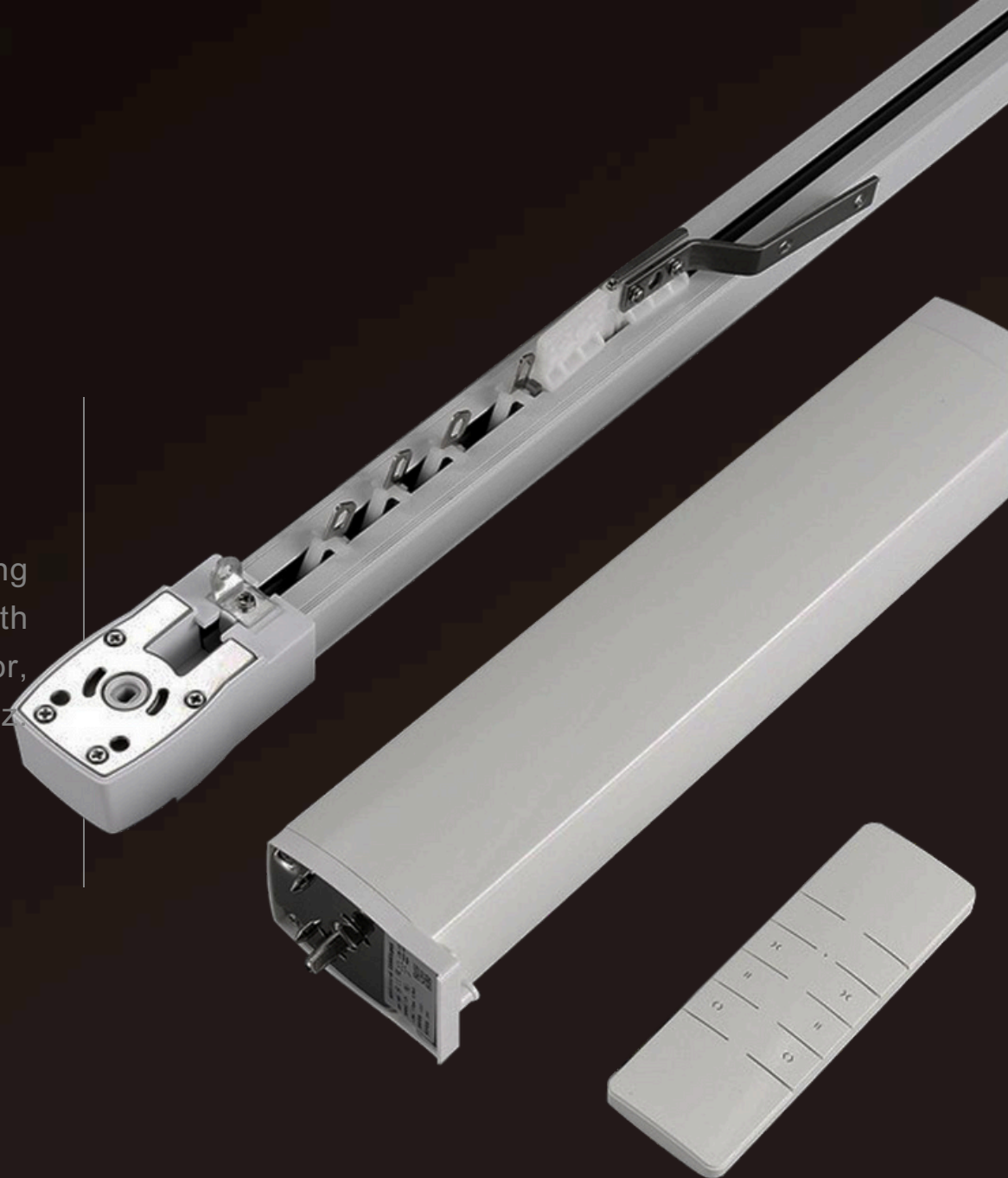
# Intelligent Curtain



# Intelligent curtain Motor

JIE-Tech zigbee3.0, intelligent curtain Motor, suitable for opening and closing curtains. Input AC220V-50~60Hz. 1.2 Torsion, with load less than 35 kg. Tuya zigbee3.0, intelligent curtain Motor, suitable for opening and closing curtains. Input AC220V-50~60Hz. 2.0 Torsion, with load less than 55 kg.

JIE-82T V-S/L





# Intelligent Control of Air Conditioner



# Smart remote control repeater

Infrared remote control transponder, connected with 2.4GWiFi. DC5V power supply. Can control brand household appliances and household appliances with infrared remote control. You can learn infrared remote control. Remote controller that can learn RF315 or 433 standard protocol.

Infrared remote control transponder, connected with 2.4GWiFi. DC5V power supply. Can control brand household appliances and household appliances with infrared remote control. You can learn the air conditioner remote control.

Infrared remote control transponder, zigbee protocol. DC5V power supply. Can control brand household appliances and household appliances with infrared remote control. You can learn infrared remote control. Can only be added to the wired zigbee gateway.



**IR+RF** transponders wifi



**wifi** infrared remote control transponder



**zigbee** infrared remote control transponder



# Smart Video Doorbell



## Video door phone

JIE-Tech visual doorbell, WIFI connection. 18650 large capacity battery power supply. Resolution: 1080P. Can talk to the mobile phone APP or LCD central control panel visually.

JIE-KS-CS





# Smart Door Lock



# zigbee intelligent outdoor door locks

The JIE-Tech Zigbee smart door lock can be linked with smart devices in the APP for scene interaction. It supports remote unlocking, as well as unlocking via fingerprint, password, IC card and mechanical key.

It is powered by 4 AA batteries, and the battery life is approximately 6 to 8 months.



JIE-ZNS-01

